

## „furnray“ render service in furnplan

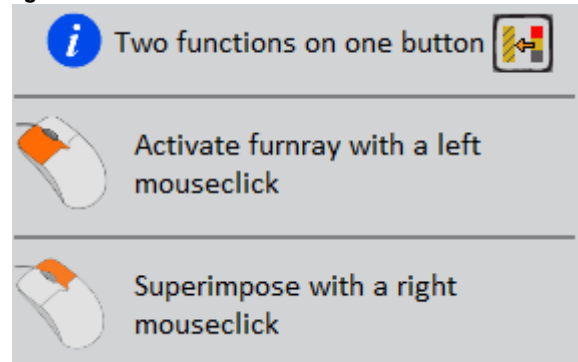
### Background:

Because furncloud is activated, the furnray functionality is available under the button shown in fig. 1. This button has two functions (fig. 2).

Fig. 1



Fig. 2



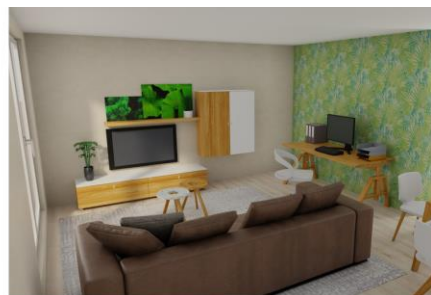
### Objective:

With furnray you can create a more beautiful, almost photorealistic image of your planning. The planning is uploaded via our furncloud to the renderserver. As soon as our server has rendered the image, it will be sent to the specified email address.

### Detail of our flyer:

#### Based on your plannings in furnplan, furnray is able to create close to photorealistic images!

- + No heavy workload for your local computer – your planning file is uploaded and the image is rendered on our devices.
- + high quality rendered image within minutes
- + convince your customers with the visual experience of furniture planning
- + no additional charges - completely covered by your furnplan license
- + currently in the introductory phase



## Using furnray:

1. After a left mouse click on the furnray button (fig.1) the following dialog box will open (fig. 3)
2. Under e-mail 1 and optionally e-mail 2, you can enter the e-mail addresses to which the rendered plannings should be returned. You can use the 'Save' button to store the entered e-mail address.
3. The size of the image can also be changed. We recommend to select the default setting, which will copy the dimensions of the currently selected planning.
4. The ambient light settings can be used to make the whole image brighter or darker. Please note: Some of the lamps and windows are also adding light to the planning. We recommend to start off with a medium setting.
5. By default, furnplan uses a white background. This can be changed to, for instance, 'slightly clouded'.
6. If the "Sun" checkbox is ticked (fig. 4), the light conditions of the rendering can be adjusted. The angle of incidence can be used to set the height of the sun. The position angle can be used to adjust the angle from which the sun illuminates the planning.
7. By clicking the Upload button, the planning will be uploaded to our render server, after which you will receive the rendered image by email. Once the planning has been successfully uploaded, the order number will be displayed in the same window (fig. 5).

Fig. 3

furnray

e-mail 1:  
[input field]  
Save

e-mail 2:  
[input field]

Picture size :  
like furnplan

Main lighting :  
Medium

Background image :  
White

Sun:

Scene contains no lighting.

Upload

Fig. 4

Sun:

Height angle :  
15

Position angle:  
0

Fig. 5

Order Number : suz77nv4

You will receive an email as soon as the order has been processed

OK