

## furnshow

### What is furnshow?

Furnshow is an online live stream in furnplan which can be used to plan furniture together with your customer. The livestream can be opened by your customer via the internet browser. While talking on the phone, you share the planning in real time via the web browser.

Continue to consult and create 3D designs together with your customers. Furnshow is included in your furnplan license!

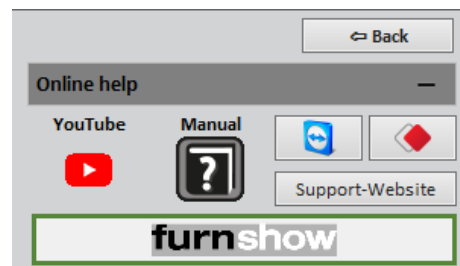
### How does furnshow work?

Simply open furnplan and click on the button with the question mark (fig. 1) The furnshow button can be found in the online help section on the right hand side (fig. 2)

Fig. 1

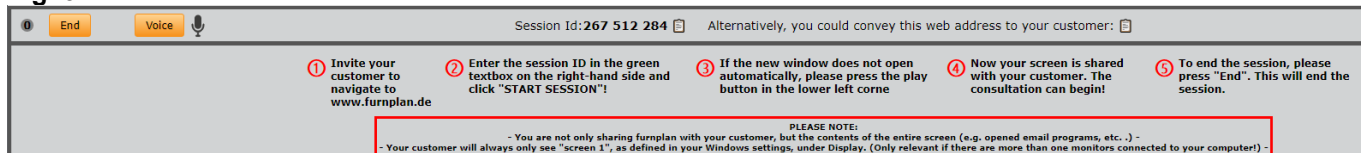


Fig. 2



Click on the furnshow button with the green border. On the bottom of the main furnplan window, an extended function bar opens for the operation of furnshow (fig. 3)

Fig. 3



There are two options to share an online planning via furnshow:

**Option 1:** Provide your customer with a session ID (Fig. 4) Use the button to copy the session ID to the clipboard. (Fig. 5) Your customer can enter this ID on our homepage on [www.furnplan.de](http://www.furnplan.de) (Fig. 6)

Fig. 4

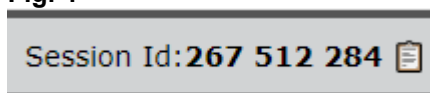


Fig. 5



Fig. 6

DEUTSCH // ENGLISH

HOME | SCHNITTSTELLEN | SEMINARE | VORTEILE | MÖBELHERSTELLER | KONTAKT

## DAS PROFI-PLANUNGSPROGRAMM SPEZIELL FÜR DEN MÖBELHANDEL

**JETZT FURNPLAN ENTDECKEN!**

Durch die einfache Anwendbarkeit von furnplan beweisen wir unserem Kunden Planungs-Kompetenz auf höchstem Niveau.

Über 100 Herstellerkataloge sind für den Möbelfachhandel kostenfrei verfügbar. Diese wurden selbstverständlich mit unserer komplexen Planungslogik erstellt, welche Ihnen hilft, Fehler zu vermeiden und blitzschnell Preisberechnungen durchzuführen.

### Home

Herzlich Willkommen bei furnplan. Der Software für professionelle 3D-Möbelplanung.

Mit furnplan gestalten Sie blitzschnell Räume und kreative Möbelkombinationen. Selbstverständlich rechnet furnplan Ihnen in Echtzeit den korrekten Preis aus. Bestellen Sie fehlerfrei Ihre Möbel online oder nutzen Sie unsere ERP-Schnittstellen für Ihr Warenwirtschaftssystem.

Aufgrund der einfachen und intuitiven Bedienung von furnplan wird die Planung zum visuellen Erlebnis.

Erleben Sie selbst, warum über 3.000 Möbelhändler und über 100 Möbelhersteller bereits auf furnplan setzen.

**Testen Sie furnplan sechs Monate lang komplett gratis und unverbindlich!  
Ganz ohne Kleingedrucktes...**

#### Optimale Unterstützung am POS

furnplan denkt mit: in unseren Katalogen sind Logiken programmiert, die Ihnen bei der Vermeidung von Planungs- und Kalkulationsfehlern helfen.

**» JETZT GRATIS TESTEN**

#### Premium Service

Wir bieten kostenfreien Support via Telefon, E-Mail und Fernwartung direkt auf Ihrem Computer.

**» ALLE VORTEILE AUF EINEN BLICK**

### furnshow

Geben Sie hier Ihre Sitzungs-ID ein

**SITZUNG STARTEN!**

#### NOCH FRAGEN?

Wünschen Sie direkt Kontakt oder benötigen Sie Hilfe? Rufen Sie uns an oder senden Sie uns eine E-Mail:

Telefon: +49 (0) 2568/9320-0  
Mo. - Fr., 9:00 - 17:00 Uhr (CET)

E-Mail: info@furnplan.de

- Support Homepage
- TeamViewer
- AnyDesk
- Seminare
- Flyer

**Option 2:** Send your customer a direct link to the live planning. Use the button to copy the link to your clipboard. (Fig. 7)

Fig. 7

Alternatively, you could convey this web address to your customer:

As soon as the customer has opened the transmission, a 1 appears in a pulsating circle on the bottom of the screen (Fig. 8)

**Please note:** This consultation can be opened simultaneously by two "viewers". If this is the case, the number "2"

will be shown in the pulsating circle.

**Fig. 8**



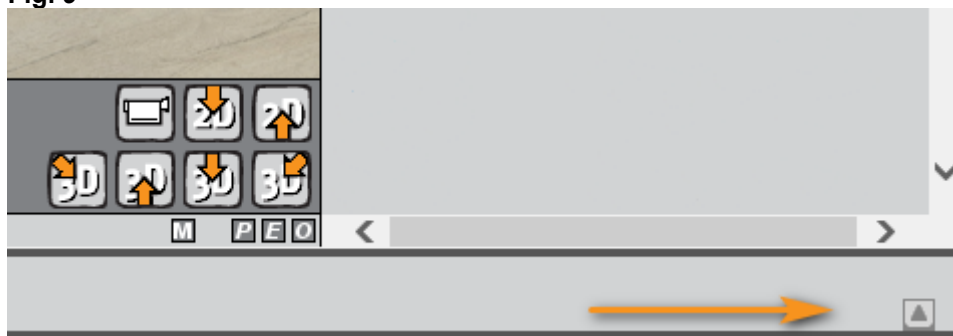
The customer will now see your screen and you can start the consultation.

### Please note:

- You are not only sharing furnplan with your customer, but the contents of the entire screen (e.g. opened email programs, etc.)
- Your customer will always only see "screen 1", as defined in your Windows settings, under Display (only relevant if there are more than one monitors connected to your computer)
- Your customer can only see your screen, not interact with it.

The toolbar for the operation of furnshow has now been reduced in size. To unfold it again, use the button at the bottom right hand corner (fig. 9)

**Fig. 9**



### Voice functionality

Click the "Voice" button to talk directly to your customer (2) (Fig. 10). The customer can hear you talk as soon as the microphone symbol in your browser turns green. (Fig. 12) Your customer, on its turn, can click on the "Voice" button in his browser (1) (Fig. 10) and will be able to talk back as soon as the microphone turns green (Fig. 13). In some cases, the customer must explicitly allow access to the microphone (fig. 11)

**Fig. 10**

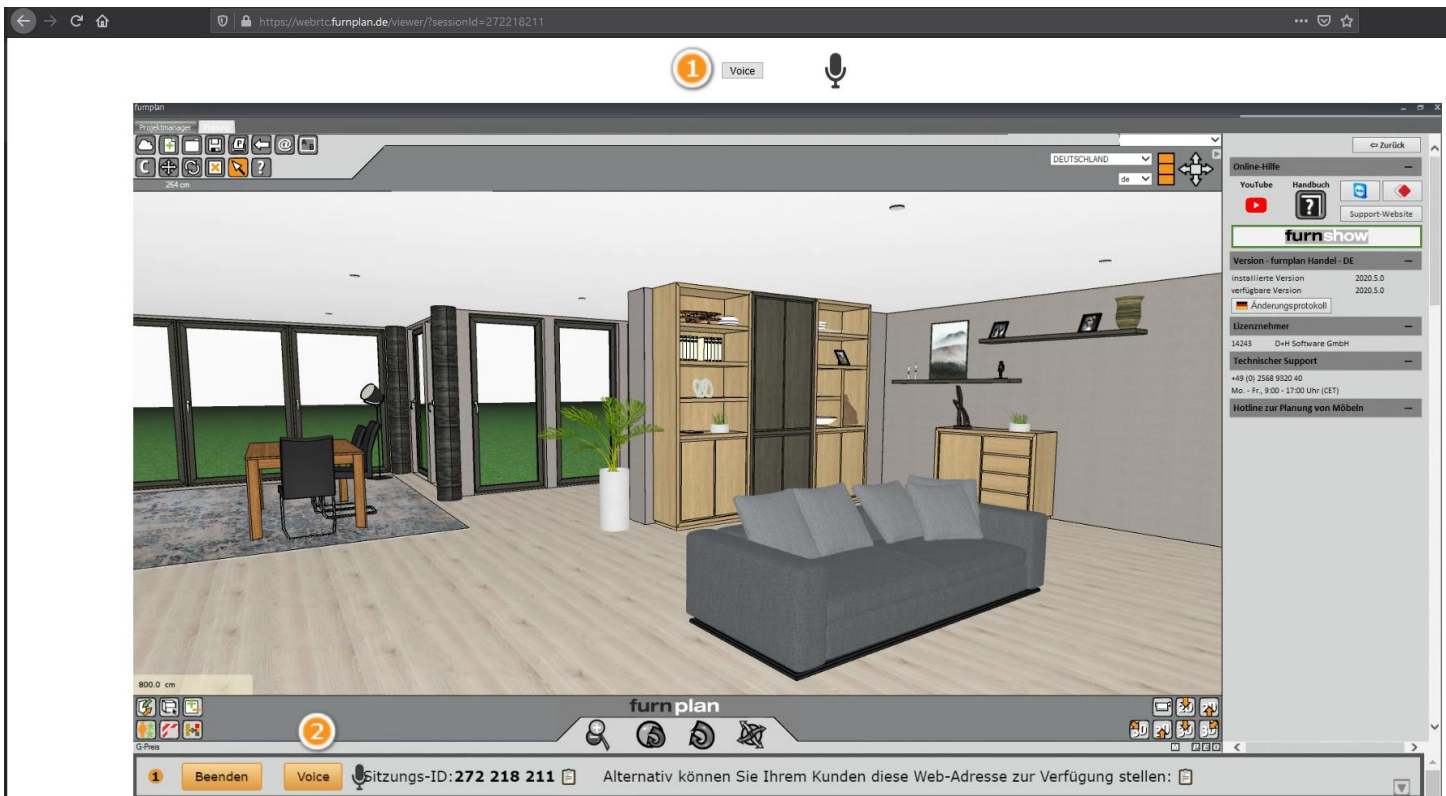


Fig. 11

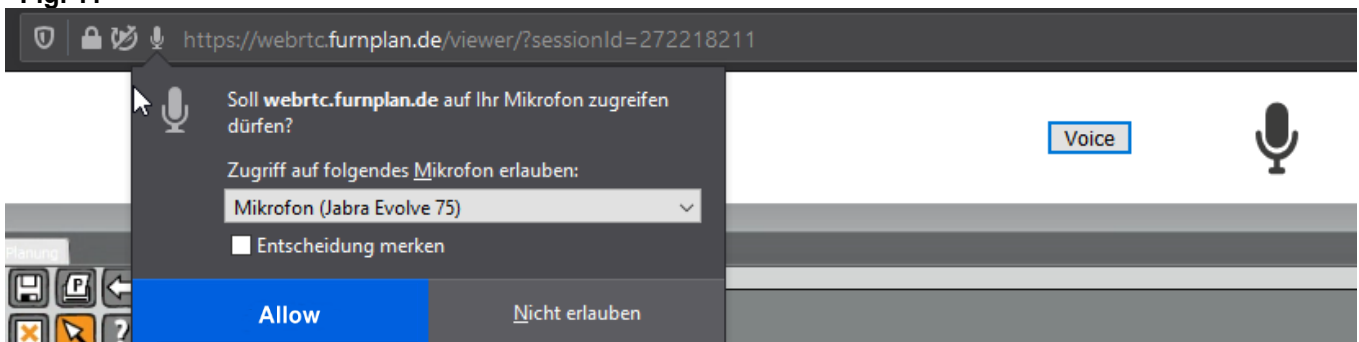


Fig. 12

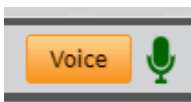


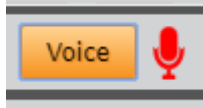
Fig. 13



To mute the microphone (briefly), click the "Voice" button again. The microphone symbol now turns red and the microphone is muted (Fig.14 and 15) **Note that your client will be able to visually see that you are muting the microphone.**

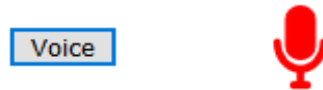
## Display Salesperson

Fig. 14



## Display Customer

Fig. 15



To end the session, simply press the "End" button. The transmission (image and sound) is now terminated. (Fig. 16)

Fig. 16



### Please note:

Furnplan advises the use of the Chrome browser, since Google Chrome offers the best support for all the different features in furnshow at the moment.